

# Beyond Housing, 24:1 and Food Access

*March 28, 2014*



**Vontriece McDowell**  
Director of Community Engagement

**Natalie Clay**  
Strategic Initiatives Manager

**BEYOND**  
HOUSING

*Helping entire communities become better places to live.*

# Beyond Housing and 24:1

- Beyond Housing
- The 24:1 Initiative
  - Normandy School District
  - Collective Impact Backbone Facilitator, Service Provider, Developers

# Commitment to Food Access

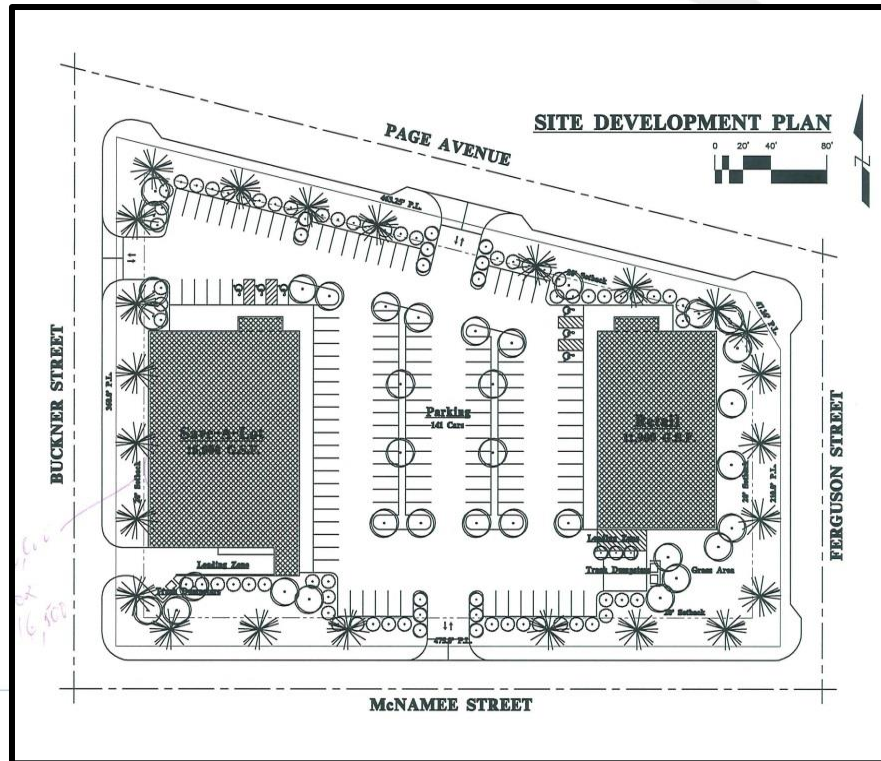
In the Normandy School District...

- **43% residents** obese, vs. **21%** in STL County
- **23% children** are obese, vs. **14%** in MO
- **17% children** are overweight, vs. **14%** in MO
- **145 ER visits** for children under 15, per 1000, vs. **70.6** in STL County

Sources: *American Community Survey, 2012, MICA, 2010*

# One Solution: BH-Owned Grocery Store

- Pagedale Community Action Plan
- Beyond Housing's Role





# One Solution: BH-Owned Grocery Store



  
**BEYOND**  
HOUSING